

Downsend School Redevelopment Proposals

Founded in 1898, Downsend School moved to its current main site on Leatherhead Road in 1918. Over the last century, the school has evolved and grown with various developments and planning permissions, meaning it is able to accommodate up to 560 students. However, student numbers are currently 20% below this figure and the school needs to take action to address this situation (and the reasons for it) to ensure a successful future.

In response to parent demand, we announced last year that we would be introducing a 3-year GCSE programme from September 2020 – this will provide an all-through experience for all children at Downsend, starting their journey from age two, right up to 16. Over time, student numbers will rise to a sustainable level within the approved figure.



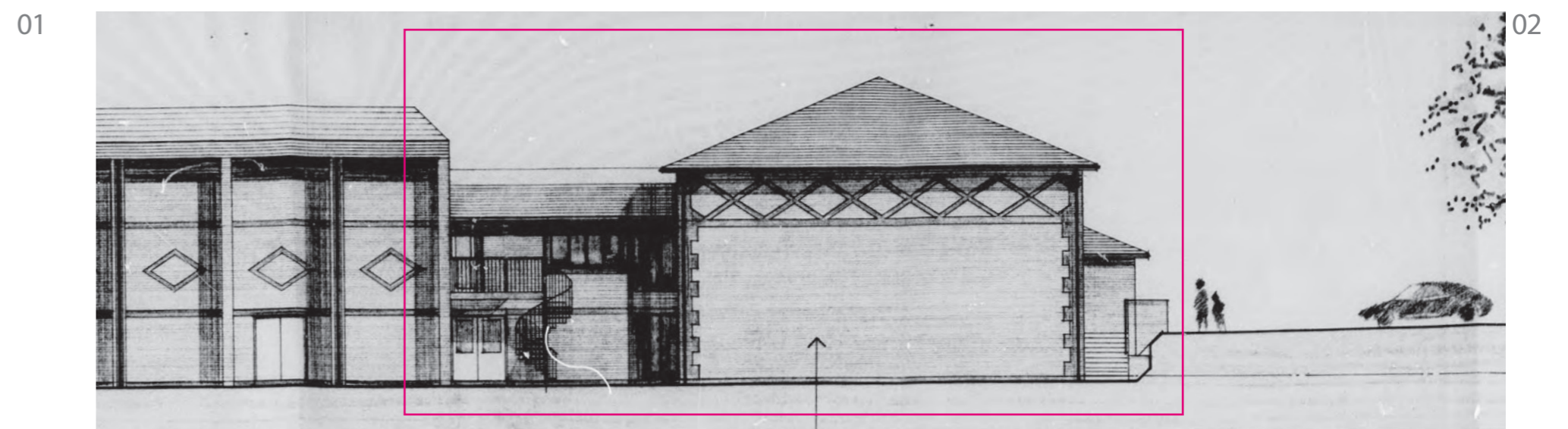
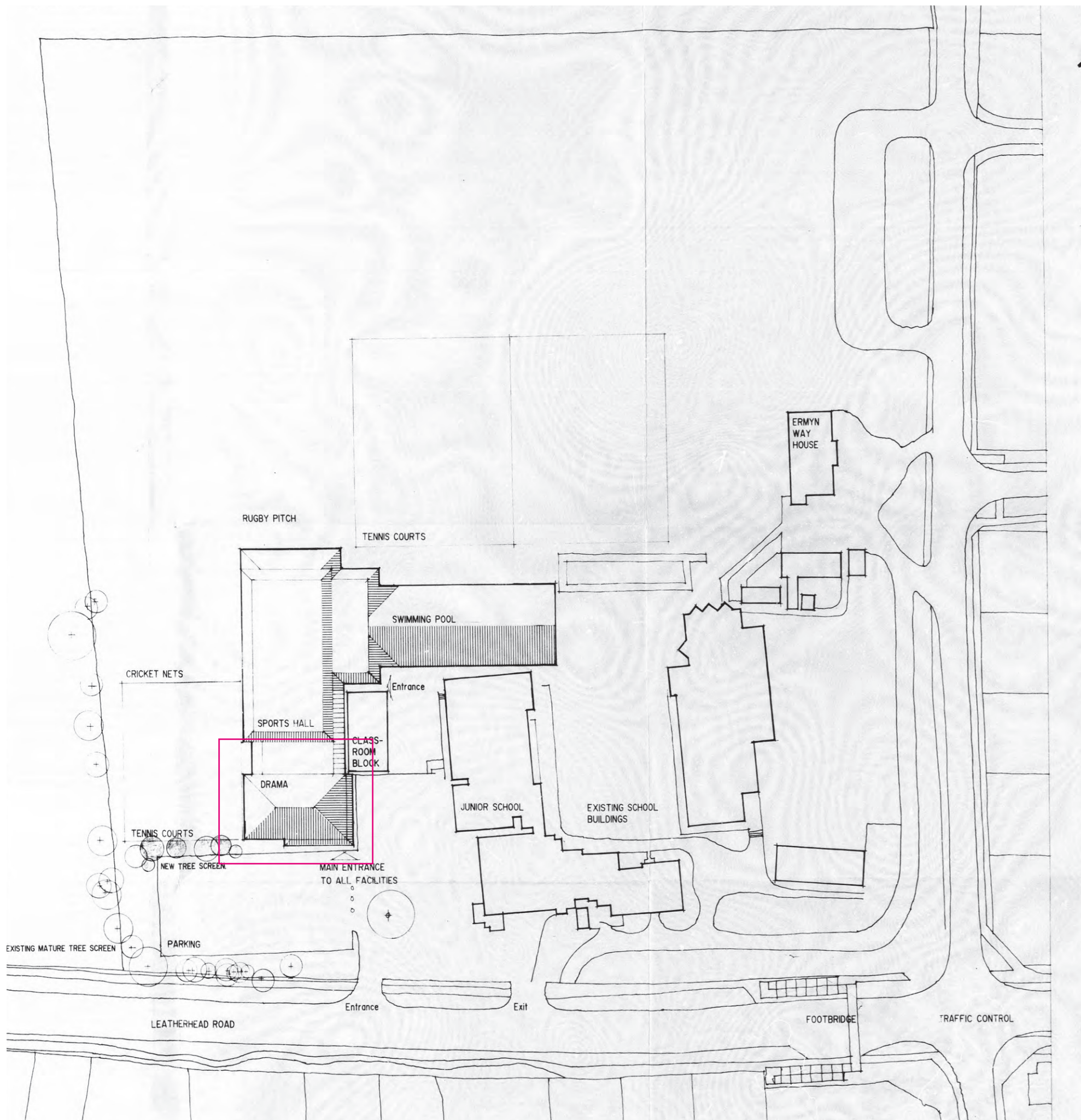
01 01
02 02
03 Existing Site plan and two existing views of site.



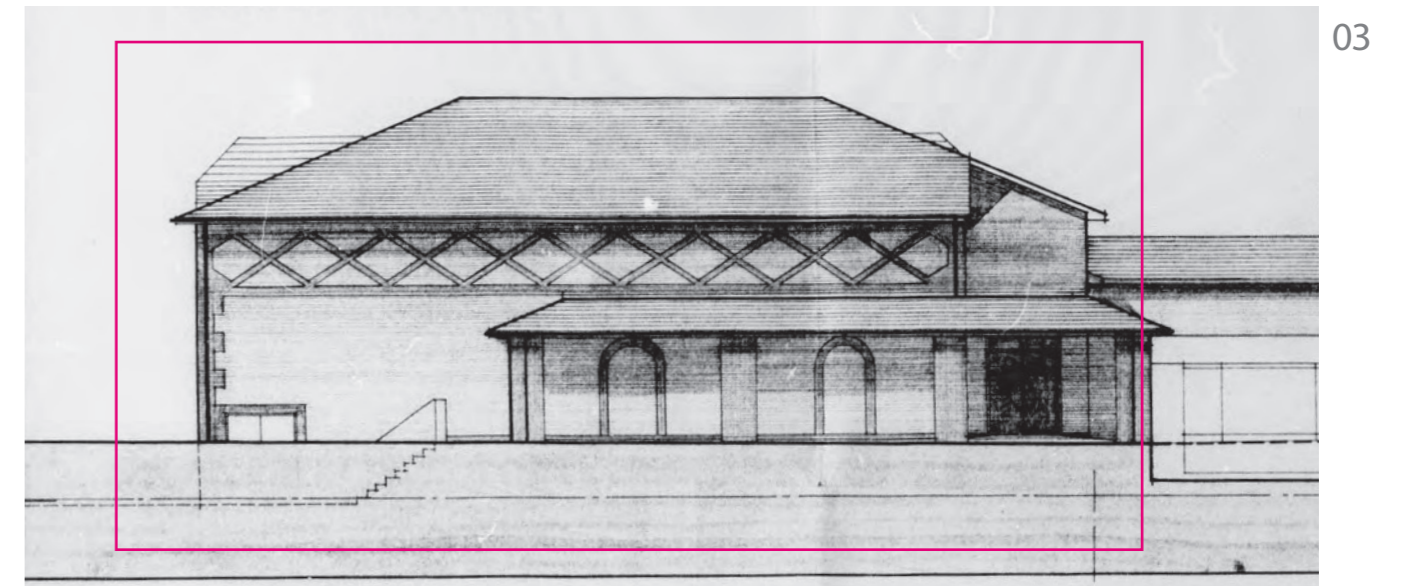
Downsend School

Previous Consent

In the late 1980s, the school obtained planning permission for a new drama block, swimming pool and sports hall – many children have benefited from the pool and sports hall and they remain important facilities to this day. However, the vision for the specialist drama space has not been realised until now.



01 Previous planning approval, never fully realised. Red outline highlighting element not built.
02,03 South and West Elevations of Prior Approved design.
04 Proposed Site Plan



To continue to deliver a broad and engaging curriculum, we are delighted that Downsend has secured investment to develop specialist facilities for the arts, which includes music, art, drama and much more. These additional specialist teaching spaces will ensure the children at Downsend benefit from an excellent education where every child can succeed.

The Creative Arts Centre will be built as an extension to the front of the existing Sports Hall, facing Leatherhead Road. The front of the building will be over 25 metres from the school's boundary to Leatherhead Road. The building will result in a loss of up to 11 car parking spaces next to the sports hall, but these will be re-provided within a reconfiguration of the staff car park on Grange Road.



DOWNSEND
SCHOOL

COGNITA



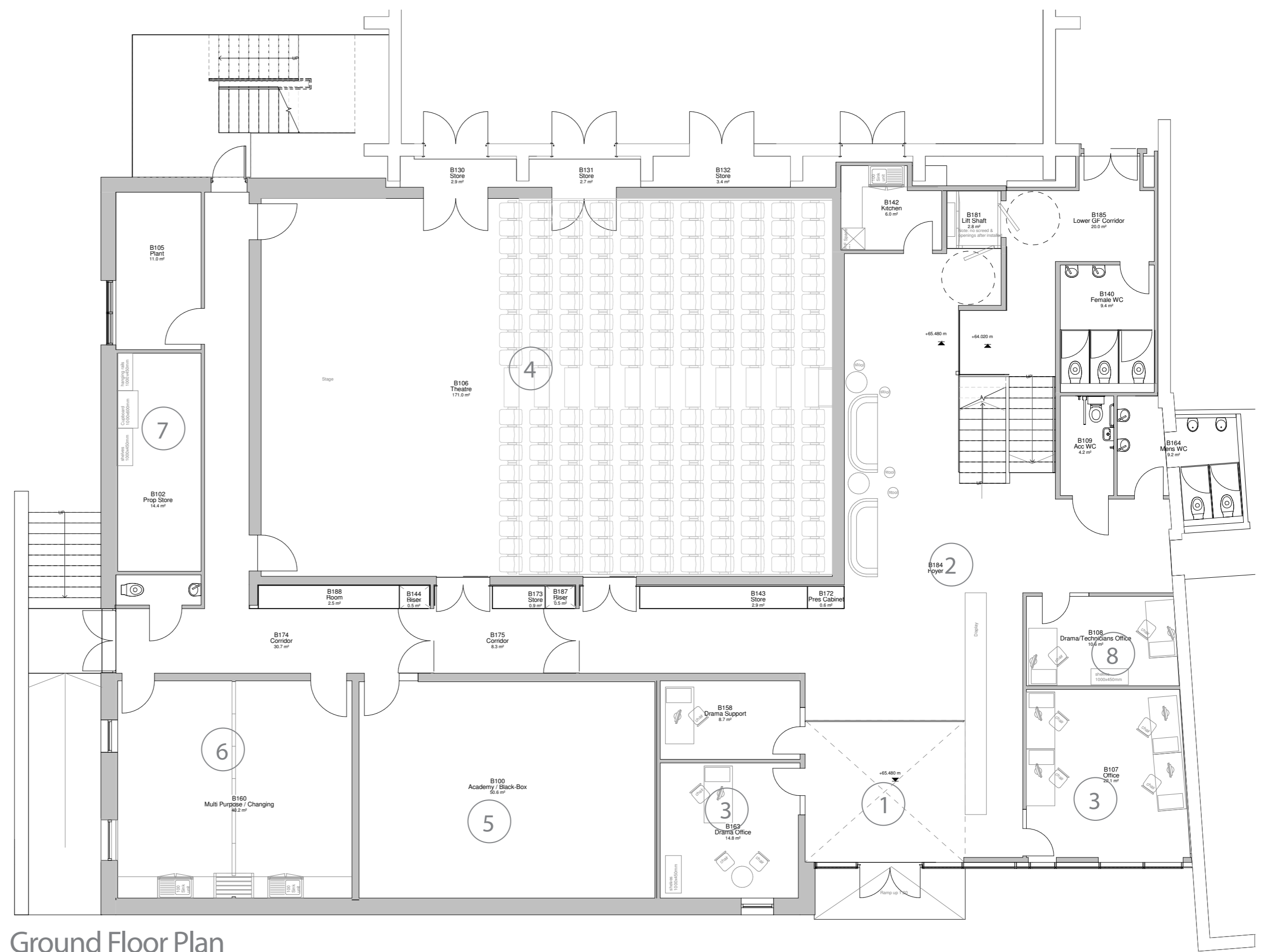
Downsend School Floor Plan Layouts

The proposed state-of-the-art Creative Arts Centre will support our focus on STEAM (Science, Technology, Engineering, Arts and Mathematics). As well as providing the School with facilities we do not currently have, we are also considering opening up the new Centre for limited community use in line with existing arrangements.

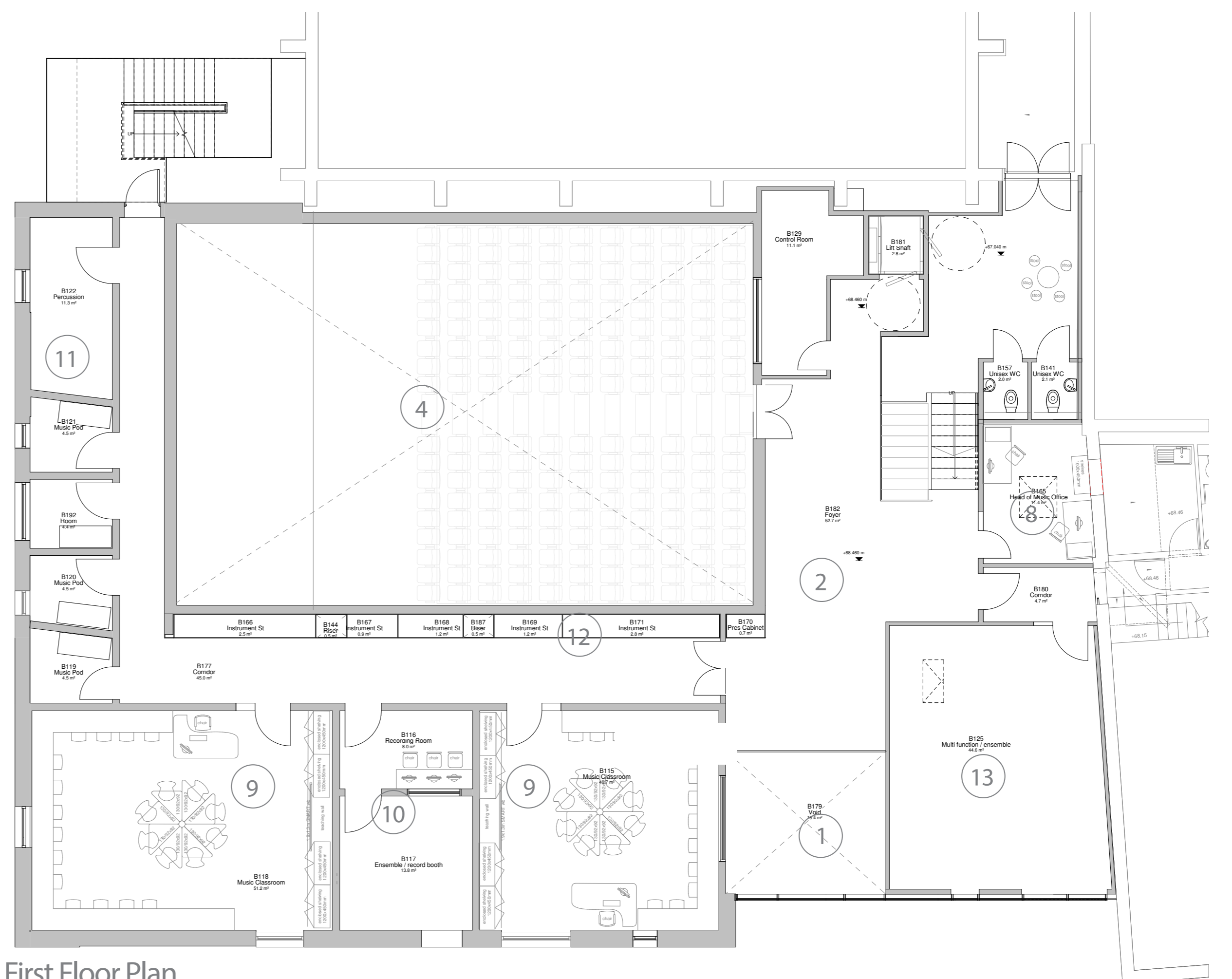
A key feature of the new Centre is a flexible performance space with the ability to be laid out as a 198-seat theatre or used for exams and exhibitions with the seating retracted. This space will provide a bespoke environment for the school's drama productions and musical events, which currently take place in the Sports Hall, as well as being used daily for assemblies. New specialist classrooms for music and drama will also be provided.

The proposed plans of the new building are shown in the plans opposite and provide the following facilities:

- 1 A prominent new entrance and double height foyer located directly off the existing drop-off area.
- 2 A generous lobby with a new stair and lift providing links through to the Turret and Sports buildings.
- 3 Staff / administration offices and reception area.
- 4 A double-height performance hall with retractable seating for 198, storage and a first floor control room.
- 5 A 'black box' drama studio.
- 6 A multi-purpose teaching space / dressing room.
- 7 Back stage access and props store.
- 8 Offices for Music staff, Drama staff and Technicians.
- 9 Two specialist music teaching rooms.
- 10 A recording studio.
- 11 Four small and one large practice rooms.
- 12 Extensive storage for musical instruments.
- 13 Multi function / Ensemble



Ground Floor Plan



First Floor Plan



DOWNSEND
SCHOOL

COGNITA



Downsend School

Elevational treatments



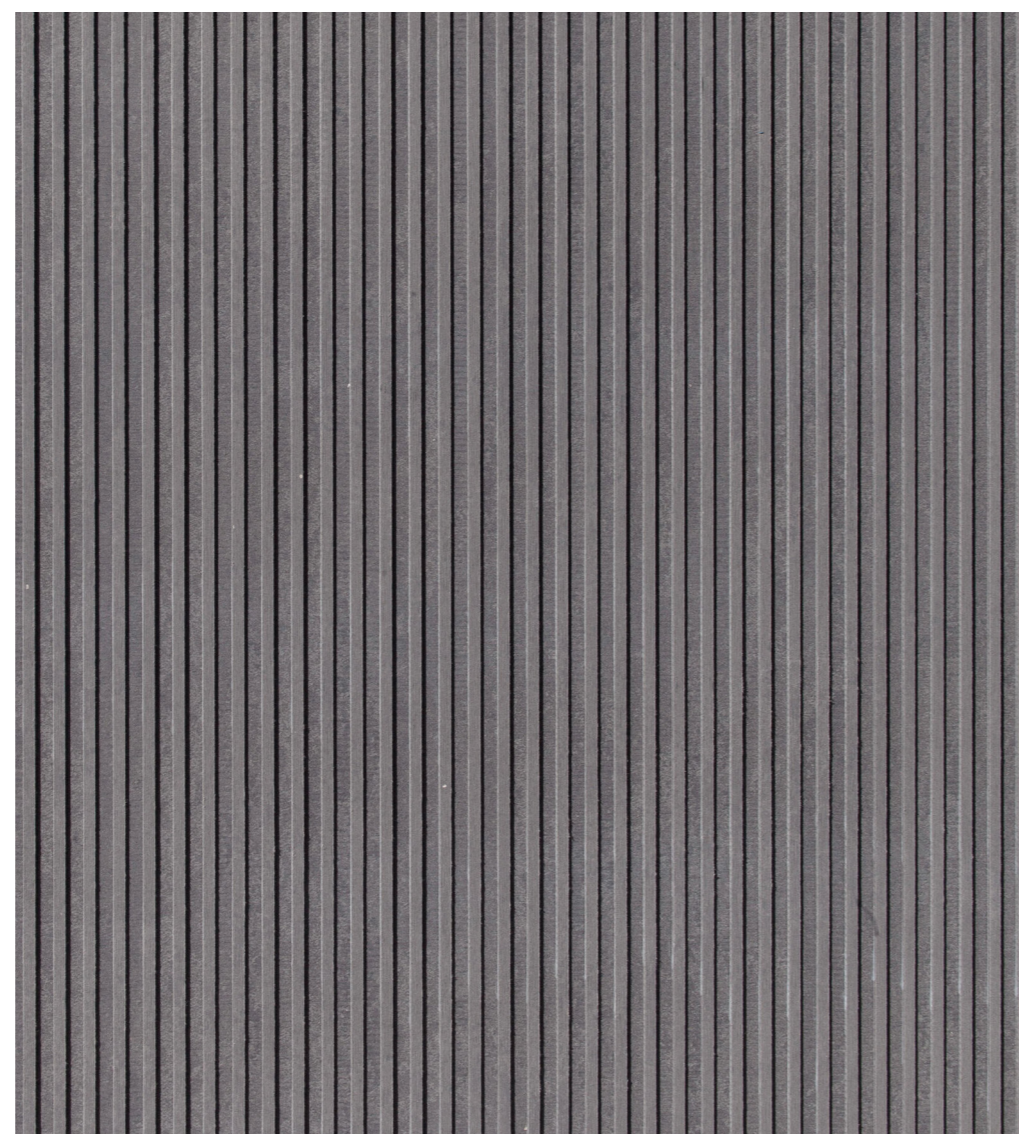
01

02

03



04



05

01 02 03 Exploration of various material studies including brickwork, and coloured cladding panels.
04 Signage design options
05 Ribbed cladding Product

A detailed design exploration was undertaken exploring various material options including brickwork and coloured cladding panels. This concluded with the ribbed cladding product (left) being selected as the most appropriate for the site and its context.

The new building is conceived as a single theatre 'box', sat on a solid plinth. Within this, the entrance is expressed as a glazed recess, which also connects to the adjacent Turret building.

The new Creative Arts block prominently faces the site entrance. Its height has been designed to match the adjacent buildings.

To contrast with the existing, the expression of the theatre 'box' is reinforced by using grey vertical panels of fibre cement board in varying widths with a raised ribbed pattern. These surface qualities generate a tactile feel and are edged in a matching aluminium trim to frame all sides and window reveals, all sat on a dark grey brick plinth.

The asymmetric positioning of the windows, and their varied size and proportion, provides visual interest and a rich rhythm to the fenestration.

The transparent curtain walling at the entrance provides welcoming views into the interior and the more public foyer areas within, at both ground and first floors.



DOWNSEND
SCHOOL

COGNITA



Downsend School

Creative Arts Visuals



01



01 External view Looking West from the Turret Building.
02 External view from entrance drive.

02



DOWNSEND
SCHOOL

COGNITA

