



**DOWNSEND
SCHOOL**

Inspiring Young Minds

BACK TO SCHOOL

Everything you need to know for a safe return

LITTLE DOWNSEND ASHTEAD

MARCH 2021

A MESSAGE FROM MRS CONLAN

As I write this message, I am experiencing a strange sense of déjà vu but am also brimming with excitement at the prospect of having full schools again!

This lockdown has been very different for our Little Downsend Schools. Even though there are little ones charging around the playgrounds, playing, collaborating and negotiating in the classrooms with the infectious sounds of song and laughter ringing through the buildings, there is also a sadness that half the school is missing.



No-one believes that young children should be learning at home on computers but that is what we have had to do, so I admire, praise and continue to be in awe of how well the teaching team, children, and parents have taken on the challenge, making the very best of it.

There is much talk in the press about 'lost learning' due to children not being in physical classrooms; while I know a virtual classroom is not the same as a physical classroom, I am confident that for the vast majority of our children, due to the quality of teaching and learning provided by our teachers and the excellent support from you, we do not need to have the same worries that many parents and schools have. That said, there is no complacency from us and, as in June, we will work closely with each child to see where they need greater support in some areas.

As you receive this brochure, I will be ripping the number 6 post-it from my pad and replacing it with a number 5 ready for Monday morning. 5 more teaching days to go and then the children will be back with us, right where they belong.

Please take some time to read the information in this guide. There won't be anything new in here but we have tried to consolidate information on Games kit, drop off and pick ups and wraparound care into one handy place.

My final words, have to be thank yous. Thank you to our outstanding Little Downsend teaching team who have worked so hard with their own classes, within each school and across all 3 schools to support each other and the children.

Thank you to our children for being the incredible people they are, and thank you to you for your support, patience, wonderful feedback, and well, the last 35 days and the next 5.

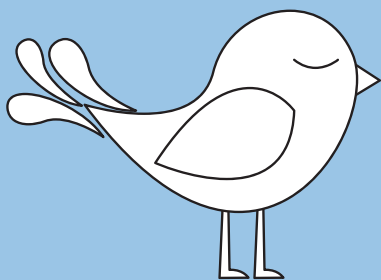
The end is in sight.

DROP OFF AND PICK UP



| Year group | Drop off | Pick up |
|------------------|--------------------------|--------------------------------|
| First Steps | 8:30am Side Gate | 12:00/3:20pm Side Gate |
| Rising Reception | 8:40am Front Entrance | 12:00/3:20pm Front Entrance |
| Reception | 8:35am Front Entrance | 3:30pm Front Entrance |
| Year 1 | 8:30am Front Entrance | 3:40pm Front Entrance |

Early Birds, Little Lates and Extended Day



- Early Birds: 7:45 - 8:20am at the side entrance
- Little Lates: 4pm at side gate
- Extended Day: 6pm at the main gate
- If you would like to book any of the above, please contact Lorna Goldie in the School Office.

DAY TO DAY INFORMATION



Uniform

Smart uniform preferred, but either winter or summer, depending on what fits, will be fine.

Shoes

We will be spending lots of time outside, so please send your child in trainers.



Games Kit

On Mondays and Wednesdays (swimming day) please send children in their Games kit.

Lunch

Full hot lunch with all our normal, healthy, varied options will return. Dining times will be staggered and enhanced cleaning will continue. Menus can be viewed in the Hub on Cognita Connect.



Break time snack

We will continue to provide a healthy break time snack so please only send in a water bottle.

Equipment

We are following guidance to clean all equipment after use. Children can take home books.



OUR APPROACH

We are continuing to take a sensible approach to in school measures as we did throughout the Autumn term and are delighted that we can continue to run as 'normal' a school day as possible.



- Full wraparound care remains in place
- Face to face specialist teaching in school remains in place with all specialist teachers wearing a visor if they are teaching indoors
- Swimming for R and Y1 will resume as soon as it is confirmed we are able to do so
- Maintaining as much normality as we can for the children in terms of the way they can play and interact with their friends
- The bubble system. Classes will continue to be seen as a bubble but to support our wraparound care and for playtimes and lunchtimes, FS/RR and then R/Y1 are a bubble together
- Promoting and ensuring good hand hygiene through very regular washing and use of hand sanitiser
- Drop off at the door. For any new children, or those struggling to settle, we will continue to work with parents and may decide on flexibility with this in the short term
- All parents and carers to wear a mask at drop off and collection
- Staggered start and finish times to avoid congestion and support social distancing for families
- Enhanced cleaning regimes in place during the school day
- Promoting nose blowing and the appropriate disposal of tissues
- Parental support in ensuring no child with symptoms attends school and that anyone with symptoms is tested immediately
- A clear plan of action to take in the event of a confirmed case
- Ongoing communication with parents
- Twice weekly COVID testing for all staff
- Clubs will resume after the Easter holidays.

THE ACADEMIC CURRICULUM

As you will know from June and September, we don't hold back when returning to normal - where the guidelines allow and when it is right for our children.

We will be back to where we left off at the end of the Autumn term when the children return on 8th March with the full curriculum being delivered, including all specialist teaching onsite, within the strict guidelines of our risk assessments.

The quality of teaching and learning has always been our priority, and we know that even through the period of lockdown this provision has been outstanding. We compared our end of Reception results from 2020 with national averages from 2019 and were delighted to see we continue to exceed in every area.

We've seen your children make excellent progress already this year and can't wait to see them continue to excel.

On return to school, our academic priorities will be focused on:

- settling the children back into classroom learning routines and habits
- evaluating and reviewing the progress made, identifying any gaps to amend our planning accordingly
- reintegrating children into the social, collaborative and group play
- lots of time outside, being active, adventurous, explorative, playful and having fun!



Everyone on the teaching team is excited to be back in school and committed to ensuring that every child is supported and challenged as needed to make the best possible progress in the remainder of the academic year. If you have any concerns about the progress of your child, please do not hesitate to contact us. We are always happy to discuss your child, the progress they are making and the strategies we are using to take them to the next step.

WHAT IF?

WHAT IF MY CHILD OR SOMEONE IN MY HOUSE PRESENTS WITH SYMPTOMS?

Your child would not be allowed to attend school until either a COVID-19 test for them or the member of the household returns a negative result.

WHAT IF MY CHILD PRESENTS WITH SYMPTOMS WHEN THEY ARE IN SCHOOL?

We would move your child to an isolation room and contact you immediately to come and collect them and arrange for a COVID-19 test. They would be cared for by a member of staff wearing PPE. The equipment the child had handled in the classroom and the isolation room would be cleaned in line with Government guidance for decontamination in non-healthcare settings.

WHAT IF SOMEONE IN OUR HOUSEHOLD TESTS POSITIVE?

If someone in the household tests positive, the other members of the household should self isolate for 10 days. If they develop symptoms within those 10 days, they should get tested. If the test returns negative, they should continue to self isolate for the remaining days up to 10. If the test returns positive, they should continue to self isolate for 10 days from the onset of symptoms.

WHAT IF MY CHILD TESTS POSITIVE?

If your child tests positive, they will not be allowed back to school until they have completed their 10 day self isolation period from the onset of symptoms, or 10 days from their test result if they had no symptoms. If the cough or loss of sense of smell/taste is still there, this is OK as these symptoms can last for several weeks after the infection has gone.

WHAT IF?

WHAT IF SOMEONE IN MY CHILD'S CLASS/BUBBLE TESTS POSITIVE?

Teachers will be keeping note of children and adults who are in close contact with each other. Close contact means:

- Direct close contact – face to face contact for any length of time, within 1 metre, including being coughed on, a face to face conversation, or unprotected skin to skin contact (so no hand holding!)
- Proximity close contacts – extended close contact (within 1-2 metres) for more than 15 mins with an infected individual

Children and adults who fall in to the above descriptions will be asked to self isolate for 10 days. Testing for these children will not be necessary as it could be too early to determine if they have the infection. If they develop symptoms within their 10 days, they should get tested. If the test returns negative, they should continue to self isolate for the remaining days up to 10. If the test returns positive, they should continue to self isolate for 10 days from the onset of symptoms.

WHAT IF MY CHILD IS SELF ISOLATING?

We will work with you to maintain as much continuity in their education as we can, although we will not be able to provide face to face online lessons as the teachers will be teaching the full class. We will continue to use Seesaw to provide work at home and use other educational resources and platforms as needed, while also trying to maintain contact with the child at home through class drop in sessions.

In all cases of a positive COVID-19 test within our school, we will contact and take additional advice from our local Health Protection Team.



DOWNSEND EARLY YEARS+ AND DOWNSEND+ HOLIDAY CLUB

Downsend EY+
for First Steps, Rising Reception,
and Reception children at Little
Downsend Leatherhead

Downsend+
for Year 1 and above
at the Main School

06 - 09 April
12 - 16 April

- EY+ will operate in a bubble system for First Steps and Rising Reception and Reception, to include children from across each Little Downsend
- Downsend+ will operate a bubble system within or across a limited number of year groups, dependent upon numbers
- EY+ will have an increased focus on outdoor activities in the Forest School area as well as usual play and arts and crafts
- Downsend+ will run as close to normal as possible, with a range of activities from arts and crafts to swimming, sports, and cooking
- A hot lunch will be provided at both sites
- We plan to invite bookings via Cognita Connect forms and will let you know as soon as this has been published.



CONTACTING US

We are always open and willing to meet with you to discuss your child or answer any questions you may have.

For general day to day queries:

- Lorna Goldie in the School Office:
 - littledownsendashtead@downsend.co.uk
 - 01372 385 439

For queries related to your child's work:

- Your child's teacher via the School Office

For any other conversations, please contact me or Miss Hill:

- Vanessa.conlan@downsend.co.uk
- Christeen.hill@downsend.co.uk

NB:
We have not yet enabled the functionality for parents to message teachers in Cognita Connect. This is to enable staff to focus on their email inbox and provide responses in good time.



VOICE OF THE PARENT 2021 HEADLINES - THANK YOU

We are humbled by your feedback. The headline results are below, and a full analysis and action plan will follow in the coming weeks

